

Xerox[®] XML Configuration Editor for Print Drivers

Customer Tip

© 2024 Xerox Corporation. All rights reserved. Xerox® AltaLink® and VersaLink® are trademarks of Xerox Corporation in the United States and/or other countries. BR29829

Other company trademarks are also acknowledged. Dc11cc0474

Document Version: 40 (July 2024)

Preface

The Xerox® XML Configuration Editor provides administrators with a convenient way to visually manage defaults in Xerox® print drivers. The editor can configure a predetermined set of defaults supported by Xerox® V3 and V4 print drivers as well as IPP and Universal Print Queues.

These settings are saved in a CommonConfiguration.xml file. The print drivers read the file during printer creation and set feature defaults accordingly. The Xerox V3 and V4 print drivers also periodically read the XML file and apply any changes to defaults. This allows administrators to update defaults after printers are installed. For IPP and Universal Print, updates to defaults are initiated after the CommonConfiguration.xml file is updated or when the printer is accessed.

Administrators can use the Xerox® XML Configuration Editor to deploy defaults to printers in common network print environments such as Citrix®, Microsoft® Point and Print, and the Xerox® Workplace Cloud

Table Contents

Preface	i
New for XML Editor v3.7.110	4
Main XML Editor Window	7
Properties Window	10
Editing Configuration Settings for Multiple Selected Printer Models or Printer Queues	11
List of Features and Values	12
Creating the Registry Entry	15
Deploying the Registry Entry and Configuration File	16
V3 Considerations	19
V4 Considerations	21
IPP and Universal Print Considerations	22
XML Defaults Example - V3/V4	24
XML Defaults Example – IPP, Universal Print, and Xerox® Print and Scan Experience	27
Common Questions Regarding CacheExpirationInMinutes	29

New for XML Editor v3.7.110

- Added support for IPP and Universal Print Queues with the Xerox Print Support App.
- Update to the EULA to include the newly launching products.

Prerequisites/Assumptions

- The new version of the editor (3.7.110) was released in conjunction with the Xerox® Windows v3 Print Driver version 5.1009.1
- You may confirm the version of XML editor you are using by clicking on the Xerox® Logo within the application. Although this editor can be used with older releases, not all features are supported.
- To run this application, the workstation must include Microsoft® .NET Framework version 4.0.30319 or greater.
- This document assumes that the user has successfully run the installer to extract the executable and placed it in a known location.
- The **software is available** at the following link:
<http://www.support.xerox.com/support/globalprinter-driver/file-download/enus.html?contentId=116479>

Default Types

Some features in the Xerox® XML Configuration Editor support three different types of defaults. These default types allow administrators to control when or if users are allowed to override defaults set with the editor. The default types are:

Enforced Settings

Enforced settings allow an administrator to supply a default value that cannot be overridden by users. Users/Admins cannot change the default within Printing Defaults or Printing Preferences. When printing, users are unable to change the feature's value from the Enforced Setting.

For example, if Output Color is set to Black and White as an Enforced Setting then users will not be able to select Color when they print from an application.

Enforced Defaults

Enforced defaults allow an administrator to supply a default value that cannot be overridden by Users/Admins within a print queue's Printing Preferences/Printing Defaults. The user can still change the value of an Enforced Default when printing.

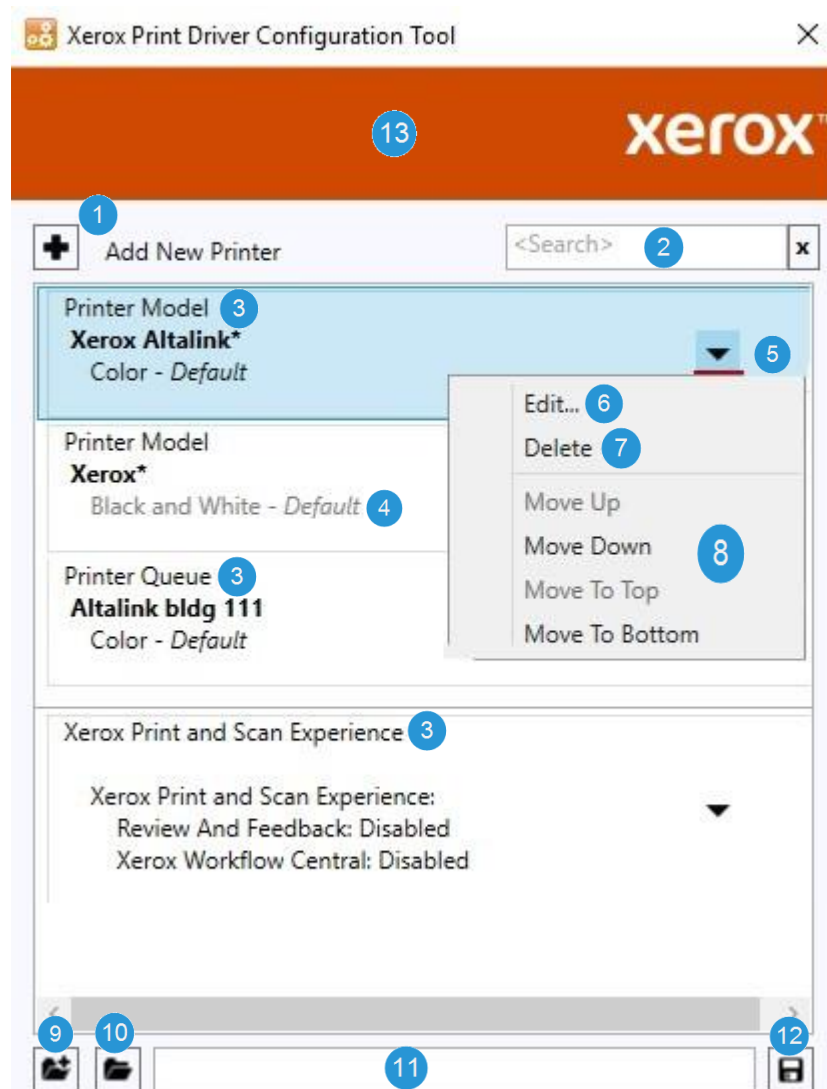
Using the same example, if Output Color is set to Black and White as an Enforced Default then users cannot change the default value back to color. Users can choose to print in color, but they must select color at print time.

Standard Defaults (Listed as Default in pull-down menu)

Standard defaults allow an administrator to supply a default value defined as recommended. Users/Admins may override Standard Defaults by specifying their own default value in Printing Preferences. They may also change the value when printing. Users/Admins cannot override Standard Defaults in Printer Properties/Printing Defaults. This is the least restrictive setting.

If Output Color is set to Black and White as a Standard Default, then users will be able to change the default value back to color. They must do so in Settings. Found under *Printers and Scanners* \<printer name>\<Printing Preferences>. They may also choose to print in color by selecting it when they print.

Main XML Editor Window



1 Add New Printer

Invokes the XML Properties dialog allowing the user to **define one or more new printer models\queues** and their configuration settings. It also allows the user to define configuration settings for the **Xerox Print and Scan Experience app**. Newly created printer configurations will be appended to the list as shown above.

2 Search

Allows a user to enter text for the purpose of filtering the list of configurations to show only those configurations that have the specified text. The search text will be matched against printer model\queue names in the list as well as any of the settings displayed in the list. Search terms are separated by spaces. The filtering is performed when the <Enter> key is pressed within this text box. Matches are only identified if all search terms are present in the configuration list item.

3 Printer Model Name or Print Queue Name or Xerox Print and Scan Experience

If you select Printer Model or Printer Queue, then the name you enter can be a specific printer model or specific printer queue. The name may contain any number of wildcard '*' characters so it can match multiple printer models or printer queues. A printer queue name can be no more than 220 characters long. The tool supports creating a printer model and printer queue with the same name.

If you select Xerox Print and Scan Experience, you cannot enter a printer model or printer queue name. All configuration settings only apply to the Xerox Print and Scan Experience app.

4 Configuration Settings

These are the settings that are associated with the printer model/queue.

If two or more configurations apply to a printer model or a printer queue, then the configuration settings encountered first in the list will override any configuration settings lower in the list.

If a printer queue and printer model have the same name, the printer queue configuration settings take priority over the printer model configuration settings.

"Conflicting settings" are gray instead of black. These conflicting settings should be addressed by the user using one of the following methods:

- Reordering the items in the list.
- Changing or adding printer model/queue configurations.
- Doing nothing with the realization that some settings may not be applied to configurations.

In the above image the *Xerox AltaLink** Color-Default setting conflicts with the *Xerox** Black and White – Default setting. Since *Xerox AltaLink** appears higher in the list the Xerox® AltaLink devices will have the default value of color instead of the default value of black and white. Consequently, if *Xerox** was moved up to the top of the list then Xerox® AltaLink devices will now default to black and white instead of color.

5 Model Configuration Menu

Contains selections allowing a user to edit, delete, or move items in the list.

6 Edit

While individual configurations can be edited in the XML Properties dialog simply by double-clicking on an item in the list, this menu selection is the only way to edit multiple selected items simultaneously. It can be used for single selections as well. Multiple selection of items in the list is done by holding down the [Ctrl] key and selecting the desired model configurations.

7 Delete

This is used to permanently remove configurations from the list. It can be done for single selections as well as multiple selections. Multiple selection of items in the list is done by holding down the [Ctrl] key and selecting the desired configurations. The [Delete] key serves the same purpose.

8 Move Selections

Allows a user to move printer model/queue configurations up and down in priority. In the event of conflicting settings, items higher in the list take precedence over items lower in the list. This works only for single items and multiple select items as long as they are continuous (i.e. no unselected model configurations in between). Otherwise, the move selections are disabled.

9 New

Clears the current list of printer model/queue configurations and prompts to save, if any changes have been made. It also clears the current configuration file path.

11 Load

Loads an existing configuration file. If a file has already been loaded the user will be prompted to save the current file before the new one is loaded.

11 Configuration File Path

Path of the most recently loaded/saved configuration file.

12 Save

Creates a common configuration file with the current values. The driver requires that the commonly used configuration file is named "CommonConfiguration.xml". XML configuration will not work correctly if the name of the CommonConfiguraiton.xml file is changed.

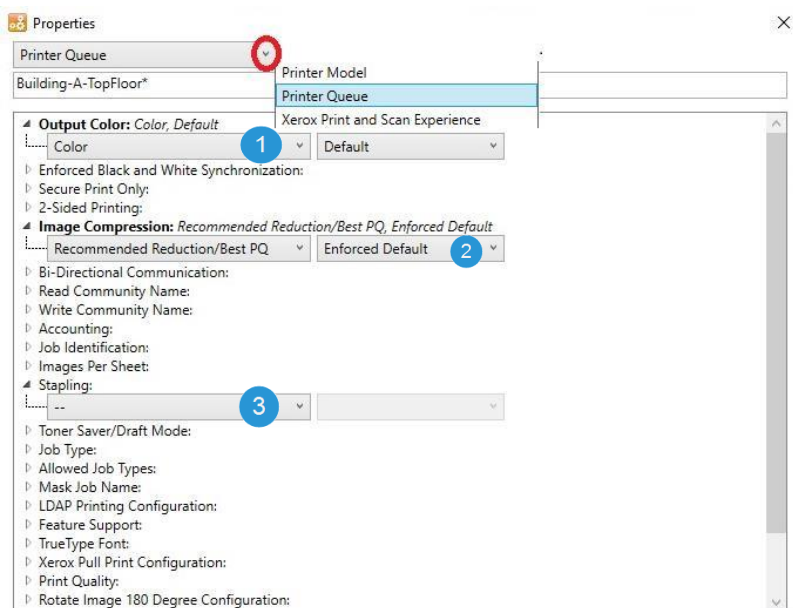
Note: To address the possible desire to define multiple configuration files (example: for different departments or office locations; not for individual print models), each file would need to reside in a different folder.

13 About

Clicking on the red Xerox® Banner opens an "About" window that includes copyright and editor software version number.

Properties Window

The following image shows the XML Properties dialog as it appears after the user selects the “Add New Printer” button or has chosen a single printer model/queue configuration to edit. Within this dialog the user can add/edit/remove configuration settings for a printer model/queue.



1 Printer Model\Printer Queue\Xerox Print and Scan Experience Dropdown & Name Text Box

If you select either Printer Model or Printer Queue when creating a new configuration, then the ‘name’ text box is empty. When editing an existing configuration, the ‘name’ text box displays the currently selected printer model\queue’s name. In the ‘name’ text box the user can:

- Rename an existing printer model/printer queue.
- Enter one or more new printer model/printer queue names, separated by semicolons (;) or commas (,).

When adding additional printer models or queues to an existing printer model or queue the XML Editor treats these additions as new configurations and will add them to the bottom of the configuration list. The original edited printer model/queue will retain its order in the list.

Note: If you select Xerox Print and Scan Experience when creating a new configuration, then the ‘name’ text box will be disabled. The tool will only allow you to configure features listed under the ‘Xerox Print and Scan Experience’ section.

2 Setting Restrictions

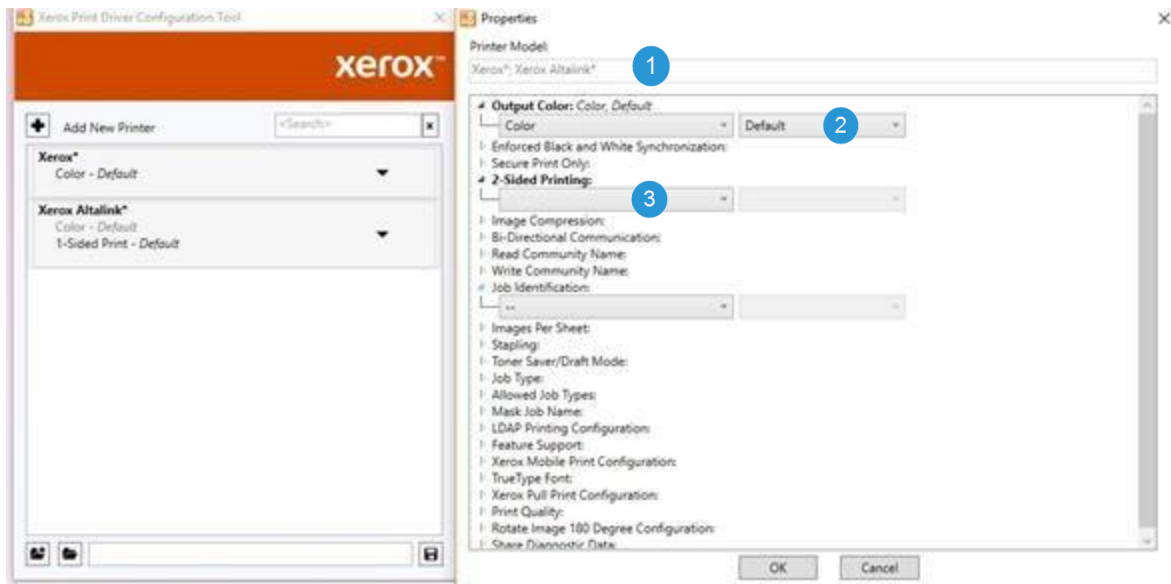
If a feature has two dropdown lists as part of their configuration selection the first dropdown displays the values available to be configured for the feature. The second dropdown allows the user to determine what restrictions are placed on that feature. The restriction values are: “Default”, “Enforced Default” or “Enforced Setting”. Not all settings have a restriction type.

3 Features Not Configured

Features that are not configured are indicated by two dashes (--).

Editing Configuration Settings for Multiple Selected Printer Models or Printer Queues

The following image shows the Properties dialog as it appears when the user has selected multiple printer models to edit. Within this dialog, the user can add/edit configuration settings that will affect all selected printer models\printer queues.



1 Printer Models or Printer Queues

When editing multiple printer model\printer queue configurations, the selected printer models are displayed. Here multiple printer models\queue names will be separated by the “;” character. The name field is read-only.

Note: It is not possible to edit multiple Xerox Print and Scan Experience configurations. Only one Xerox Print and Scan Experience configuration can be added to the list. New Xerox Print and Scan Experience configurations will replace any existing configurations.

2 Settings That are the Same Between Selected Printer Models\Printer Queues

Settings that are the same between all selected printer model\printer queue configurations will have the current value displayed. Any changes made to these settings will apply to all selected printer model\printer queue configurations.

3 Settings That Differ from Selected Printer Models\Printer Queues

Settings that differ between selected printer models\printer queues are displayed without a value in the drop down. This signifies that each printer model\printer queue configuration will retain its original value unless the user changes the setting. All selected printer model\printer queue configurations will be set to the new value.

List of Features and Values

Important Notes:

- Features delineated with **(v3)** are not applicable to the Xerox® V4 Print Drivers, Xerox® Desktop Print Experience App, IPP & Universal Print Queues with the Xerox Print Support App, and the Xerox Print and Scan Experience App.
- Xerox Pull Print Configuration, (feature #19), only affects the Xerox® Pull Print Driver V3 and the Xerox® Pull Print Driver V4. The XML Configuration Editor cannot configure any other pull print solution.
- Xerox Print and Scan Experience, (feature #25), can only be set when you select 'Xerox Print and Scan Experience' when adding a new configuration.

<ol style="list-style-type: none"> 1. Output Color <ul style="list-style-type: none"> • Color, Black and White 2. Enforced Black and White Synchronization <ul style="list-style-type: none"> • Enabled, Disabled 3. Secure Print Only <ul style="list-style-type: none"> • Enabled, Disabled 4. 2-Sided Printing <ul style="list-style-type: none"> • 1-Sided Print • 2-Sided Print • 2-Sided Print, Flip on Short Edge • 2-Sided Any 5. (v3) Image Compression <ul style="list-style-type: none"> • Disabled • Recommended Reduction/Best PQ • Good Reduction/Acceptable PQ • Max Reduction 6. Bi-Directional Communication <ul style="list-style-type: none"> • Disable Job Notification • Enable Job Notification • Disable BiDi 7. Read Community Name 8. (v3) Write Community Name 9. Job Identification <ul style="list-style-type: none"> • Disable Job Id 	<ol style="list-style-type: none"> 10. Images Per Page <ul style="list-style-type: none"> • 1, 2, 4, 6, 9, 16 11. Stapling <ul style="list-style-type: none"> • None, 1 Staple 12. Toner Saver/Draft Mode <ul style="list-style-type: none"> • Off, On 13. Job Type <ul style="list-style-type: none"> • Normal Print • Secure Print • Delay Print • Store File in Folder • (v3) Fax • Personal Print • Proof Print / Sample Set • Saved Job • Print With • Hold Job • Saved Background Form 	<ol style="list-style-type: none"> 14. Allowed Job Types <ol style="list-style-type: none"> A. Normal Print <ul style="list-style-type: none"> • Enabled • Disabled B. Secure Print <ul style="list-style-type: none"> • Enabled • Disabled C. Delay Print <ul style="list-style-type: none"> • Enabled • Disabled D. Store File in Folder <ul style="list-style-type: none"> • Enabled • Disabled E. (v3) Fax <ul style="list-style-type: none"> • Enabled • Disabled F. Personal Print <ul style="list-style-type: none"> • Enabled • Disabled G. Proof Print / Sample Set <ul style="list-style-type: none"> • Enabled • Disabled H. Saved Job <ul style="list-style-type: none"> • Enabled • Disabled I. Print With <ul style="list-style-type: none"> • Enabled • Disabled J. Hold Job <ul style="list-style-type: none"> • Enabled • Disabled
---	---	--

<ul style="list-style-type: none"> • Print ID on a Banner Sheet • Print ID in Margins - First Page Only • Print ID in Margins - All Pages 		<p>K. Saved Background Form</p> <ul style="list-style-type: none"> • Enabled • Disabled
--	--	---

<p>15. (v3) Mask Job Name</p> <ul style="list-style-type: none"> • Enabled, Disabled <p>16. (v3) LDAP Printing Configuration</p> <p>A. LDAP Printing Setting</p> <ul style="list-style-type: none"> • Enabled • Disabled <p>B. LDAP Printing Authentication</p> <ul style="list-style-type: none"> • None • LDAP Server • Domain <p>C. LDAP Printing Prompt</p> <ul style="list-style-type: none"> • For Every Job • After Authentication Expires <p>D. LDAP Printing Expiration</p> <ul style="list-style-type: none"> • Never • After Every Job • After User Login • 1 minute • 5 - 45 minutes (increments by 5 minutes) • 1 – 24 Hours (increments by 1 hour) <p>E. Primary Host</p> <ul style="list-style-type: none"> • [Entry] <p>F. Primary Port</p> <ul style="list-style-type: none"> • 1- 65535 <p>G. Secondary Host</p> <ul style="list-style-type: none"> • [Entry] <p>H. Secondary Port</p> <ul style="list-style-type: none"> • 1-65535 <p>I. Search Directory</p> <ul style="list-style-type: none"> • [Entry] <p>J. Search Attribute</p> <ul style="list-style-type: none"> • [Entry] <p>K. Return Attribute</p> <ul style="list-style-type: none"> • [Entry] 	<p>17. Feature Support – Saved Settings</p> <ul style="list-style-type: none"> • Enabled, Disabled <p>18. (v3) TrueType Font</p> <ul style="list-style-type: none"> • Substitute with Device Font • Download as Soft Font <p>19. Xerox Pull Print Configuration</p> <p>A. Paper Trays</p> <ul style="list-style-type: none"> • 2 Trays • 3 Trays • 4 Trays • 5 Trays • 6 Trays • 7 Trays <p>B. Stapler</p> <ul style="list-style-type: none"> • Not Installed • 1 and 2 Stapler Installed • 1, 2 and 4 Staple Installed <p>C. Hole Punch Module</p> <ul style="list-style-type: none"> • Not Installed • 2 Hole Punch Unit • 2 and 3 Hole Punch Unit • 2 and 4 Hole Punch Unit • 3 Hole Punch Unit • 4 Hole Punch Unit <p>D. Booklet Module</p> <ul style="list-style-type: none"> • Not Installed, Installed <p>E. Productivity Pack</p> <ul style="list-style-type: none"> • Not Installed, Installed <p>F. Envelope Media</p> <ul style="list-style-type: none"> • Disabled, Enabled 	<p>20. Print Quality</p> <ul style="list-style-type: none"> • Automatic • Enhanced • Fast Color • High Quality • High Resolution • High Speed • Photo Mode • Standard • Toner Saver <p>21. Rotate Image 180 Degree Configuration</p> <p>A. Intelligent 180 Degree Rotation</p> <ul style="list-style-type: none"> • Enabled, Disabled <p>B. Subsequent 180 Degree Rotation Settings</p> <ul style="list-style-type: none"> • Enabled, Disabled <p>C. Paper Size – Subsequent Rotation Print Settings</p> <ul style="list-style-type: none"> • Short Edge Feed Sizes • All Paper Sizes • A list of individual paper sizes <p>D. Orientation – Subsequent Rotation Print Settings</p> <ul style="list-style-type: none"> • Portrait Pages • Landscape Pages • Portrait and Landscape Pages <p>22. Share Diagnostic Data</p> <ul style="list-style-type: none"> • Enabled, Disabled
--	--	--

<p>23. Accounting</p> <p>A. System</p> <ul style="list-style-type: none"> • None • Local Accounting • Xerox Standard Accounting • Xerox Network Accounting • Charge Print <p>B. Mask User ID</p> <ul style="list-style-type: none"> • Enabled • Disabled <p>C. Mask Billing ID</p> <ul style="list-style-type: none"> • Enabled • Disabled <p>D. Mask Accounting ID</p> <ul style="list-style-type: none"> • Enabled • Disabled <p>E. Tracking Options</p> <ul style="list-style-type: none"> • Track for All Jobs • No Tracking • Tracking Only for Color • Tracking Only for Print • Tracking Only for Fax • Tracking Only for Color and Fax <p>F. Print-Time Prompt</p> <ul style="list-style-type: none"> • Enabled • Disabled <p>G. Remember Last Entered Codes</p> <ul style="list-style-type: none"> • Enabled • Disabled <p>H. Accounting Codes</p> <ul style="list-style-type: none"> • User ID • User ID Passcode • Accounting Type <ul style="list-style-type: none"> ○ Default Group Account ○ General Account ○ Group Account • Accounting ID • Billing ID • Billing Passcode 	<p>24. (v3) ICM Method</p> <ul style="list-style-type: none"> • ICM Disabled • ICM Handled by Printer <p>25. Xerox Print and Scan Experience</p> <p>A. Add Printer</p> <ul style="list-style-type: none"> • Disabled <p>B. Review And Feedback</p> <ul style="list-style-type: none"> • Disabled <p>C. Xerox Workflow Central</p> <ul style="list-style-type: none"> • Disabled <p>D. Order Supplies</p> <ul style="list-style-type: none"> • Disabled <p>26. (v3) Adaptive Learning (Suggestions)</p> <ul style="list-style-type: none"> • Disabled 	
---	---	--

Creating the Registry Entry

Once an administrator has created a common configuration file with the XML Configuration Editor, they will need to add the registry entry detailed below to their PCs. Xerox® print drivers use this registry entry to locate the path to the configuration file. Without the registry entry the print drivers cannot find the configuration file and are unable to apply XML defaults. Xerox® V3, V4, IPP, and Universal Print queues use the same registry key and entry.

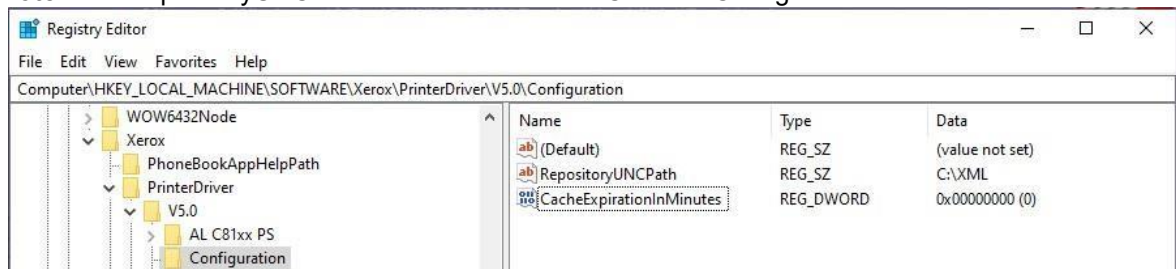
Registry Entry Creation Steps

Caution: Before proceeding with these changes, Xerox highly recommends that the registry be backed up and the changes be tested in each unique environment prior to rollout. Xerox is not responsible for any changes you may make to your operating system.

1. Open Registry Editor.
2. Go to the following location within the registry:
[HKEY_LOCAL_MACHINE \Software\Xerox\PrinterDriver\V5.0]
Note: If V5.0 does not exist, create this folder.
3. Create a new **Key** called **Configuration**. The registry key should now be:
[HKEY_LOCAL_MACHINE \Software\Xerox\PrinterDriver\V5.0\Configuration]
4. Within the Configuration key create a new **String Value** with the following name:
RepositoryUNCPPath.

In the 'Value data' field enter a single path to the .xml file's location. The location may be a server's share or local pc's folder (Example: C:\MyDefaults or \\file-server\shared_folder). This field does not support the configuration of multiple paths.

Note: The RepositoryUNCPPath should not include "CommonConfiguration.xml" at the end of it.



5. An **optional DWORD Value** with the name **CacheExpirationInMinutes** can also be added to the Configuration key.
If the **CacheExpirationInMinutes** key is not created the default is set to 1440 minutes (24 hours).
If the **CacheExpirationInMinutes** key is set to 0 (zero) the driver will check the configuration every time printer properties are accessed, which may affect driver response.
Note: Xerox® V4, IPP, and Universal Print queues do not use CacheExpirationInMinutes.
6. Exit the windows registry.
7. Place the CommonConfiguration.xml in the path specified by RepositoryUNCPath.

Deploying the Registry Entry and Configuration File

The registry entry and configuration file can be deployed in a few ways depending on the print environment. Here we will detail how to deploy them in the following common print environments.

- **Windows Client Only Printers** – Here printers are created directly on end user workstations. No print servers are involved.
- **Microsoft Point and Print** – Printers are shared from print server(s) down to end user workstations (clients).
- **Other** – Example deploying XML within a Citrix Environment Citrix.

Deployment for Windows Client Only Printers

If you do not use print servers then the registry entry will need to be added to each PC. CommonConfiguration.xml can be placed in a directory on each PC, or in an accessible network file share. XML defaults are applied to the printers on each PC, and there is no default propagation.

Deployment in Microsoft® Point and Print

Xerox® V3 and V4 print drivers both support XML defaults in Windows® Point and Print with print servers and client workstations. XML defaults are typically applied to the server print queues and then are propagated to end users' workstations (client) through Microsoft® Point and Print. Since the clients receive defaults from the print server, end user workstations do not need the registry entry or configuration file.

Deploying XML defaults for V3 Point and Print printers.

Option 1 - Server-side XML default deployment

In this option XML defaults propagate from printer shares on print server(s) to clients as described above.

- The XML registry entry must be added to the print server's registry.
- CommonConfiguration.xml can be placed in a local directory on the print server or it can be placed in a network file share accessible to the print server.

Note - The operating system is responsible for propagating defaults from the print server to client printer connections. There may be a delay from when defaults are set on the print server to when they arrive on the client.

Option 2 – Client-side XML default deployment

In this option client print connections read defaults from the CommonConfiguration.xml file and not from the print server. In this option defaults are not propagated from print servers like in option 1.

- The XML registry entry must be added to each client's registry.
- CommonConfiguration.xml can be placed in a local directory on each client or it can be placed in a network file share accessible to clients.

Deploying XML defaults for V4 Point and Print printers.

Server-side XML default deployment

As with V3 drivers, XML defaults are propagated from the print server to clients.

- The XML registry entry must be added to the print server's registry.
- CommonConfiguration.xml can be placed in a local directory on the print server or it can be placed in a network file share accessible to the print server.

Note - The operating system is responsible for propagating defaults from the print server to client printer connections. There may be a delay from when defaults are set on the print server to when they arrive on the client.

Xerox® V4 print drivers do not support client-side XML default deployment in Point and Print. XML defaults **must** be deployed on the print server.

Deployment in Citrix® Environments

Deploying XML Defaults to Citrix® Auto-Created Printers Important points when setting up XML defaults for Citrix® Auto-Created printers

- XML defaults should be setup on both Citrix® servers and on clients.
- XML defaults should be setup on clients before creating printers.
- XML defaults should be setup on Citrix® XenApp servers before the print drivers are added and before users log into Citrix® sessions.

Step 1 - Setup XML defaults on each Citrix® server

These steps need to be performed on any Citrix® server that auto-creates Xerox® Printers.

1. Add the '**Configuration**' key containing *RepositoryUNCPath* and optionally, *CacheExpirationInMinutes* to each server's registry.
2. Place "CommonConfiguration.xml" in the path specified in *RepositoryUNCPath*.
3. Add the print driver to the Citrix® server.

Step 2 - Setup XML defaults on each client

1. Add the '**Configuration**' key containing *RepositoryUNCPath* and optionally, *CacheExpirationInMinutes* to each client's registry.
2. Place "CommonConfiguration.xml" in the path specified in *RepositoryUNCPath*.
 - a. The "CommonConfiguration.xml" file on the client **must match** the "CommonConfiguration.xml" file on the Citrix® server.
3. Create printers with the print driver.
 - a. The print driver on the client **must match** the print driver installed on the Citrix® server.

Deploying XML Defaults to Citrix® Session Printers Important points when setting up XML defaults for Citrix® Session printers

- XML defaults should be setup on both Citrix® servers and on print servers.
- XML defaults should be setup on print servers before creating printers.

- XML defaults should be setup on Citrix® XenApp servers before the print drivers are added and before users log into Citrix® sessions.
- XML defaults do not need to be setup on clients if no print drivers are installed on them.

Step 1 - Setup XML defaults on each Citrix® server

1. Add the '**Configuration**' key containing *RepositoryUNCPath* and optionally, *CacheExpirationInMinutes* to each server's registry.
2. Place "CommonConfiguration.xml" in the path specified in *RepositoryUNCPath*.
3. Add the print driver to the Citrix® server.

Step 2 - Setup XML defaults on each print server

1. Add the '**Configuration**' key containing *RepositoryUNCPath* and optionally, *CacheExpirationInMinutes* to the print server's registry.
2. Place "CommonConfiguration.xml" in the path specified in *RepositoryUNCPath*.
 - a. The "CommonConfiguration.xml" file on the print server **must match** the "CommonConfiguration.xml" file on the Citrix® server.
3. Create printers with the print driver.
 - a. The print driver on the print server **must match** the print driver installed on the Citrix® server.

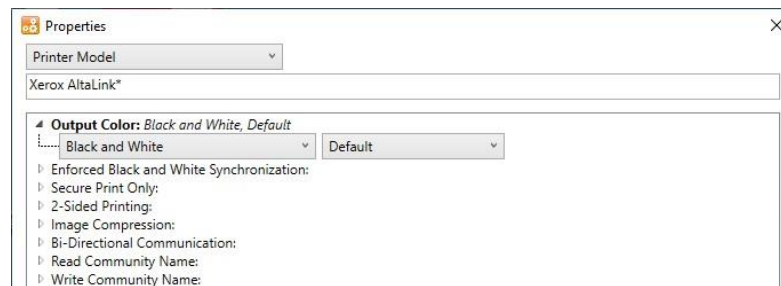
V3 Considerations

This section contains information administrators should consider when deploying XML defaults to the Xerox® Global Print Driver and the Xerox® Pull Print Driver.

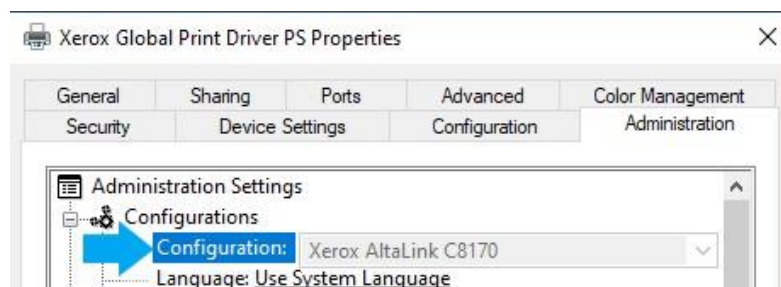
Xerox® Global Print Driver

The Xerox® Global Print Driver determines which XML defaults to apply based on the printer model it is connected to. If you are using Printer Model to define XML defaults and deploying the Xerox® Global Print Driver, the Printer Model you use in the editor should correlate with the printer model the driver is connected to.

For example, say you are deploying Xerox® AltaLink® C8170 printers with the Xerox® Global Print Driver. In the Xerox XML Editor use a model string like “*Xerox AltaLink**”. Do **not** use the model string “*Xerox Global Print Driver**”.

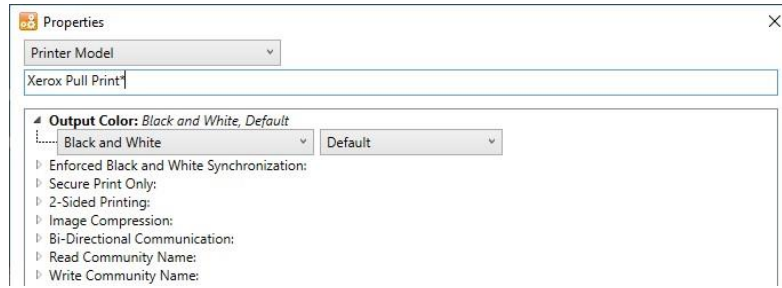


You can see which printer model the Xerox® Global Print Driver is connected to in the Printer Properties dialog. To see the printer model: open **Settings**, then navigate to *Printers and Scanners*\<printer name>\Printer Properties. Select the **Administration** tab. The printer model is displayed next to **Configuration**. This is the printer model the Xerox® Global Print Driver will use when it reads defaults from the XML file.



Xerox® Pull Print Driver

The Xerox® Pull Print Driver does **not** determine defaults based on the printer model it is connected to. If you are using Printer Model to define XML defaults use Pull Print Driver as the model. For example, *Xerox Pull Print Driver**.



Note: The Xerox Pull Print Configuration feature in the XML Configuration Editor only affects the Xerox® Pull Print Driver V3 and the Xerox® Pull Print Driver V4. The editor cannot configure any other pull print solution.

V4 Considerations

The Xerox® Desktop Print Experience application must be installed for XML configuration to work with Xerox® V4 print drivers. The driver cannot read defaults from the XML configuration file without it. If you are using print servers then the Xerox® Desktop Print Experience application must be installed on each print server and on all clients.

Administrators can deploy the configuration file and the registry entry before or after they install the Xerox® Desktop Print Experience, but XML defaults will not work until it is installed.



The Xerox® Desktop Print Experience

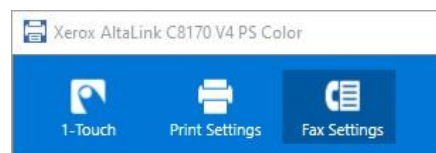
Xerox® V4 printers do not use the *CacheExpirationInMinutes* registry entry. Instead, the driver reads the configuration file on certain OS events.

- User sign in.
- A new printer is created with a Xerox® V4 print driver
- A new Point and Print connection is made to a V4 printer share.
- A new configuration file is created, or the current file is updated.
- The Xerox® Desktop Print Experience is installed or upgraded.

V4 printers use the same registry key as V3 print drivers, *HKEY_LOCAL_MACHINE\Software\Xerox\PrinterDriver\V5.0\Configuration*.

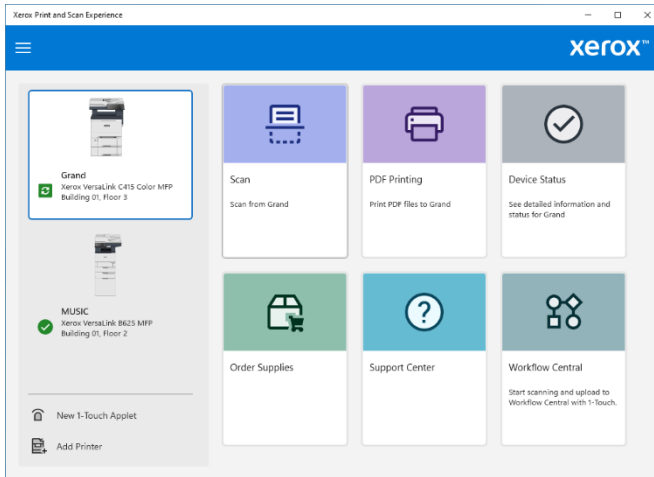
Some features in the XML Configuration Editor are not supported by V4 print drivers. The Features and Values list in this document details which features are unsupported.

- One unsupported feature to note is Job Type - Fax. In Xerox® V4 print drivers, fax is not a print job type. Instead, it is a separate feature. As a result, Fax cannot be set as the default job type or as an allowed job type with the XML Configuration Editor.

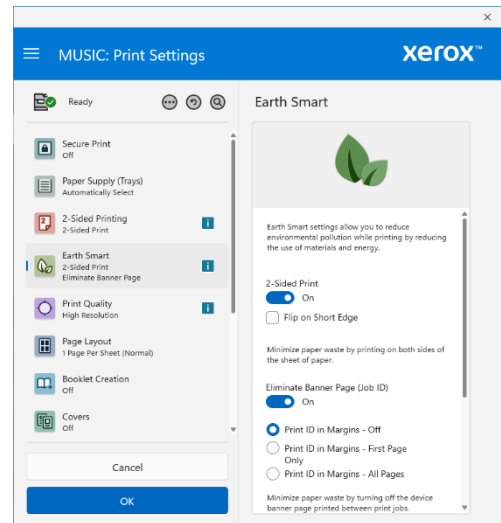


IPP and Universal Print Considerations

The Xerox® Print and Scan Experience application must be installed to enable XML configuration when printing with IPP and Universal Print queues. IPP and Universal Print queues use the Xerox® Print and Scan Experience as a print support app. The Xerox® Print and Scan Experience app also uses XML defaults when printing PDFs directly from the app. The Xerox® Print and Scan Experience can be found in the Microsoft® Store.



Xerox® Print and Scan Experience showing the PDF Printing Feature



Xerox® Print and Scan Experience as a Print Support App for a Xerox IPP printer

Like V4, IPP, and Universal Print queues do not use the *CacheExpirationInMinutes* registry entry. The Xerox® Print and Scan Experience application will automatically read the configuration file every two hours in the background. It will also read the configuration file on certain OS events.

- User sign in.
- A new configuration file is created, or the current file is updated.
- When the RepositoryUNCPath key is changed.
- A new IPP or Universal Print queue is added in Windows.

IPP, and Universal Print queues use the same registry key as V3 print drivers, *HKEY_LOCAL_MACHINE \Software\Xerox\PrinterDriver\V5.0\Configuration*.

As with Xerox V4, some features in the XML Configuration Editor are not supported by IPP and Universal Print queues. See the Features and Values list in this document for details.

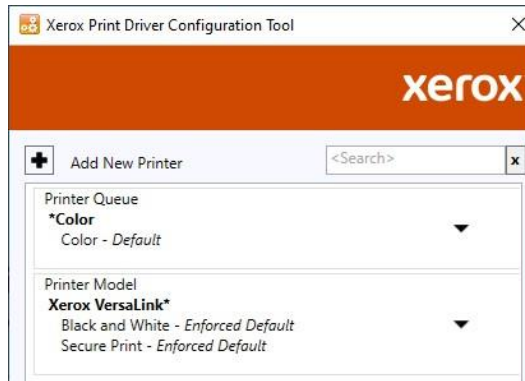
XML Configuration Caveats for IPP and Universal Print Queues

- Due to an OS limitation, the Xerox® Print and Scan Experience does not support Defaults or Enforced Defaults in Windows versions prior to Windows 11 24H2. This includes Windows 10 22H2 and earlier.
- **Enforced Settings** are supported in Windows versions prior to Windows 11 24H2. They will be reflected in print jobs with one caveat.
 - Enforced Settings will not be reflected in the application print dialog but will be present when the job is printed.

- XML Configuration settings may not be applied to the first print after a new XML configuration file is added to a PC. The Xerox® Print and Scan Experience needs time to process the new configuration file. If a document is printed before the app finishes processing the file, then XML configuration settings will not be applied to it.
 - To fix this problem close the application, reopen the document, and then print it again.
- The Xerox® Print and Scan Experience does not support the following features with XML configuration.
 - Bi-Directional Communication (*Enable/Disable Job Notification, Disable BiDi*)
 - Feature Support (*Saved Settings*)
 - Job Type (*Saved Job, Sample Set*)
- Secure Print will be disabled when Job Type *Normal Print* is set as an Enforced Setting.

XML Defaults Example - V3/V4

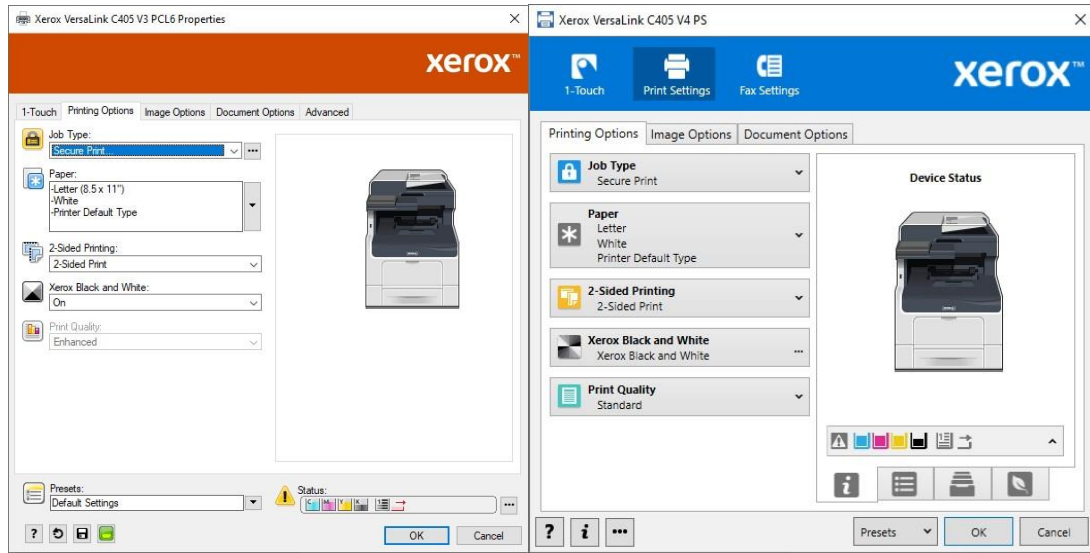
In this section we will demonstrate how to use the XML Editor to set the defaults for a few Xerox printers. In the XML Editor we have created a CommonConfiguration.xml file with the following configuration settings.



- Here the highest priority configuration setting is Printer Queue ***Color**. This setting defaults any printer whose queue name ends in “Color” to Color.
- The next configuration setting is Printer Model **Xerox VersaLink***. This setting defaults any Xerox® VersaLink® printer to Black & White and sets the default job type to Secure Print. Furthermore, since these are Enforced Defaults end users will not be able to change the default value in Printing Preferences.
- The * character in each configuration setting is a wildcard. It represents any number of characters. So, the string **Xerox VersaLink*** means “Xerox VersaLink” followed by any number of characters out to the maximum of 220. Effectively this means that the configuration setting “**Xerox VersaLink***” would apply to any Xerox VersaLink® printer model. For example, the Xerox® VersaLink® C405 and the Xerox® VersaLink® C7030.

As we will see, if a printer is both a Xerox VersaLink® model and has “Color” at the end of its queue name then both sets of defaults will be applied. Since ***Color** has a higher priority than **Xerox VersaLink*** the Color default setting will take precedence.

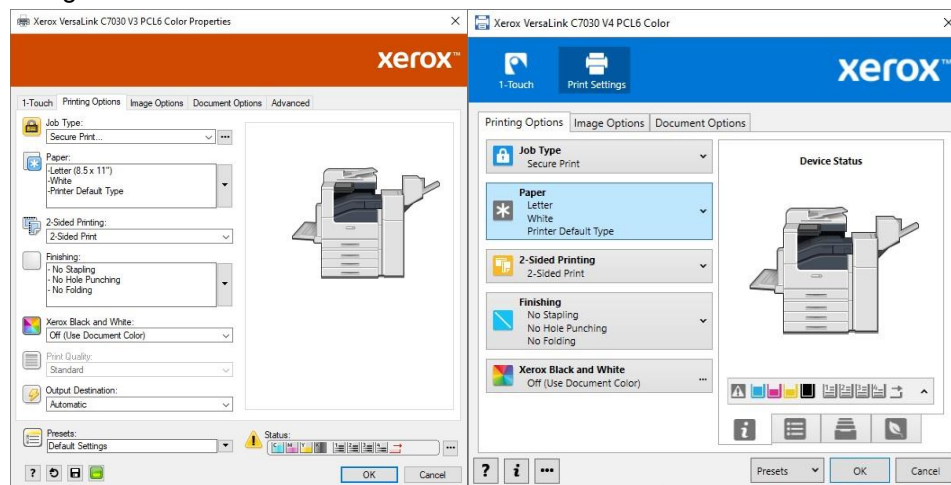
Below are screenshots of what users would see when they print to Xerox® VersaLink® C405 printers that read the CommonConfiguration.xml file detailed above. The printer on the left uses a Xerox® V3 print driver. The printer on the right uses a Xerox® V4 print driver.



The V3 printer is named “Xerox VersaLink C405 V3 PCL6”. The V4 printer has the queue name “Xerox VersaLink C405 V4 PS”.

- Both printers do not contain the word “Color” at the end of their queue name, so the *Color default is not applied.
- Both printers are Xerox® VersaLink® models, so the Xerox VersaLink* enforced defaults are applied, setting Color to **Black and White** and Job Type to **Secure Print**.

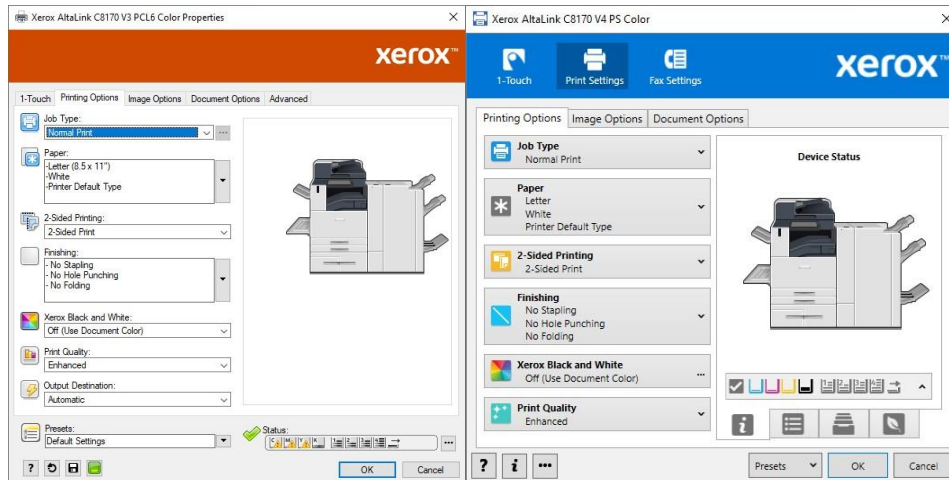
The next pair of screenshots display what users would see when printing to Xerox® Versalink® C7030 printers with queue names ending with the word ‘Color’. Both printers are reading the same CommonConfiguration.xml file.



The V3 printer is named “Xerox VersaLink C7030 V3 PCL6 Color”. The V4 printer has the queue name “Xerox VersaLink C7030 V4 PCL6 Color”.

- Both printers contain the word “Color” at the end of their queue name, so the *Color default is applied.
- Both printers are Xerox® VersaLink® models, so the Xerox VersaLink* enforced defaults are also applied. This sets Job Type to **Secure Print**. However, the *Color default takes precedence, so drivers are not defaulted to **Black and White**.

Finally, here are screenshots of what users would see when printing with Xerox® AltaLink® C8170 printers reading the same CommonConfiguration.xml file.

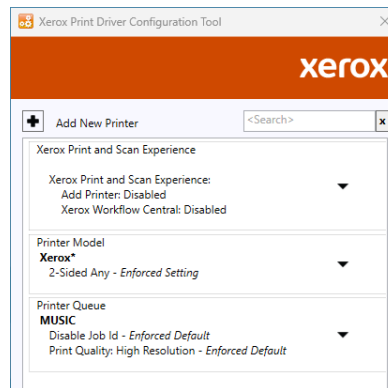


The V3 printer is named “Xerox AltaLink C8170 V3 PCL6 Color”. The V4 printer has the queue name “Xerox AltaLink C8170 V4 PS Color”.

- Both printers contain the word “Color” at the end of their queue name, so the *Color default is applied.
- Both printers are Xerox® AltaLink® models, so the Xerox VersaLink* enforced defaults are not applied. As a result, the default Job Type stays on the factory default, **Normal Print**.

XML Defaults Example – IPP, Universal Print, and Xerox® Print and Scan Experience

In this section we will demonstrate how the XML Configuration tool can set defaults for IPP and Universal Print queues. We will also demonstrate how the tool can be used to configure the Xerox® Print and Scan Experience.

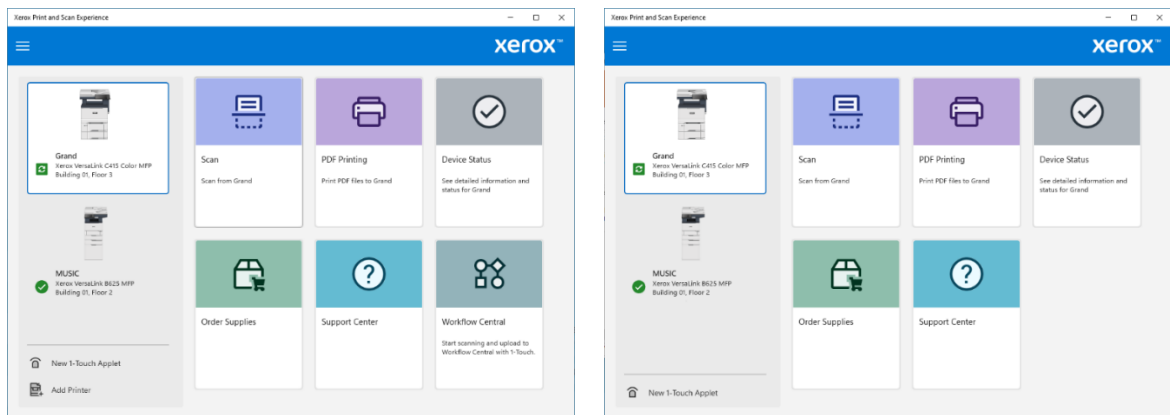


The Print Driver Configuration Tool is set up to enforce the following Settings in the Xerox® Print and Scan Experience App: **Xerox Workflow Central: Disabled** and **Add Printer: Disabled**.

The tool will set 2-Sided Printing to **2-Sided Any** for all printer models that begin with “Xerox”.

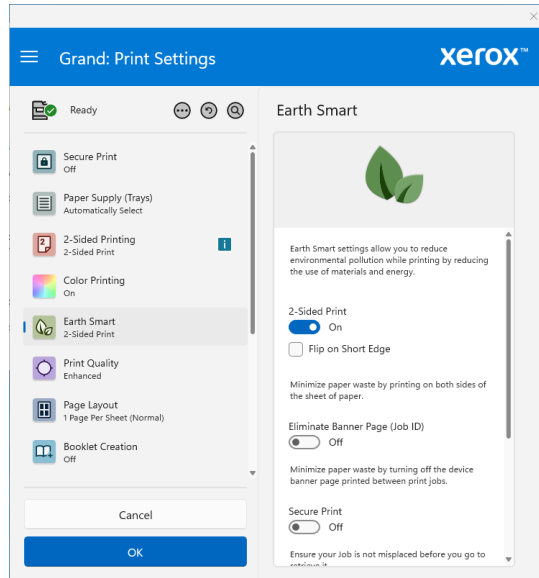
For a printer queue named “MUSIC” the tool will **set Disable Job Id** and **Print Quality: High Resolution** as Enforced Defaults.

Here is what users will see when they open the Xerox® Print and Scan Experience before and after the configuration settings are applied.

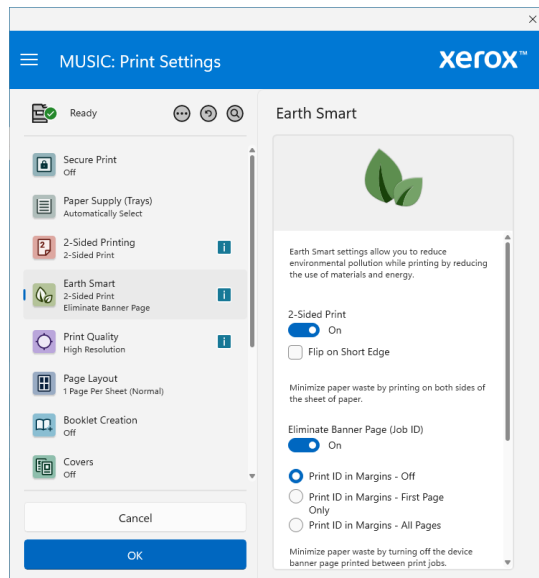


Xerox® Print and Scan Experience before configuration Xerox® Print and Scan Experience after configuration

Below are the settings a user will see when they print with the **Grand** printer, an IPP printer. Grand is a Xerox VersaLink® C415 Color Multifunction Printer. Since the printer model starts with “Xerox” it picks up 2-Sided Print Any as an Enforced Setting.



Below are the settings a user will see when they print with the **MUSIC** printer, a Universal Print printer. MUSIC is a *Xerox VersaLink® B625 Multifunction Printer*. Its model also starts with “Xerox”, so it picks up the 2-Sided Print Any as an Enforced Setting. Music will also pick up the settings specified for the “MUSIC” queue, Disable Job ID and High Resolution as Enforced Defaults.



Common Questions Regarding CacheExpirationInMinutes

Question: Does CacheExpirationInMinutes impact XML when configuring a **Xerox® V4** print drivers?

Answer: The CacheExpirationInMinutes value has no effect on the Xerox® V4 Print Drivers and Xerox® Desktop Print Experience App.

Question: Is XML invoked every time the **Xerox® V3** print driver properties is opened regardless of if the CacheExpirationInMinutes setting is configured?

Answer: The first time the Xerox® V3 Print Driver reads the CommonConfiguration.xml file from the RepositoryUNCpath it will load all the values from the file and update in the cache. The driver will read from the cache until the Cache Expiration In Minutes value times out. If the configuration file is modified prior to the cache expiration, the cache is automatically updated.

Question: Does the “timer” for CacheExpirationInMinutes restart each time the **Xerox® V3 Print Driver** is invoked?

Answer: No. Cache expiration time starts when the print dialog is invoked and stores this time in registry. If the cache is updated in between (due to an update to the configuration file), the expiration time is initialized again.

Question: Does XML ever run as a background process when configuring the **Xerox® V3 Print Driver**?

Answer: No.

Question: Does XML ever run as a background process when configuring the **Xerox® V4 Print Driver**?

Answer: Yes, when exiting device properties due to a change in printer model or port. It only runs for a few seconds.

Question: Why doesn't the **Xerox® V3 Print Driver** change settings to default values when the user accesses Printer Properties and CacheExpirationInMinutes is set to 0?

Answer: Printer Properties hasn't changed to default values because the CommonConfiguration.xml file hasn't changed.

The Xerox® V3 Print Driver will apply defaults from the configuration file under two conditions:

1. CacheExpirationInMinutes has expired
2. CommonConfiguration.xml has changed

When CacheExpirationInMinutes is set to 0 the Xerox® V3 Print Driver always regards the cache as expired. Therefore, it checks CommonConfiguraiton.xml to see if it has changed since it was last read. If the configuration file has changed and the printer is one of the models or queues specified in the file, then the new defaults are applied to the printer. If CommonConfiguration.xml hasn't changed then no changes are made to Printer Properties.